

# NCTF-RH Update

## *Fuel Tank Advisory Committee*



**01 OCTOBER 2025**



Apple



Android



# Decommissioning Updates



# Tank Cleaning

Information current as of 26 SEP 2025

SAFE. DELIBERATE. ENGAGED. COMMITTED.

Status	
Step	Tank(s)
1	20
2	2, 3, 4, 6
3	5
4	7, 8

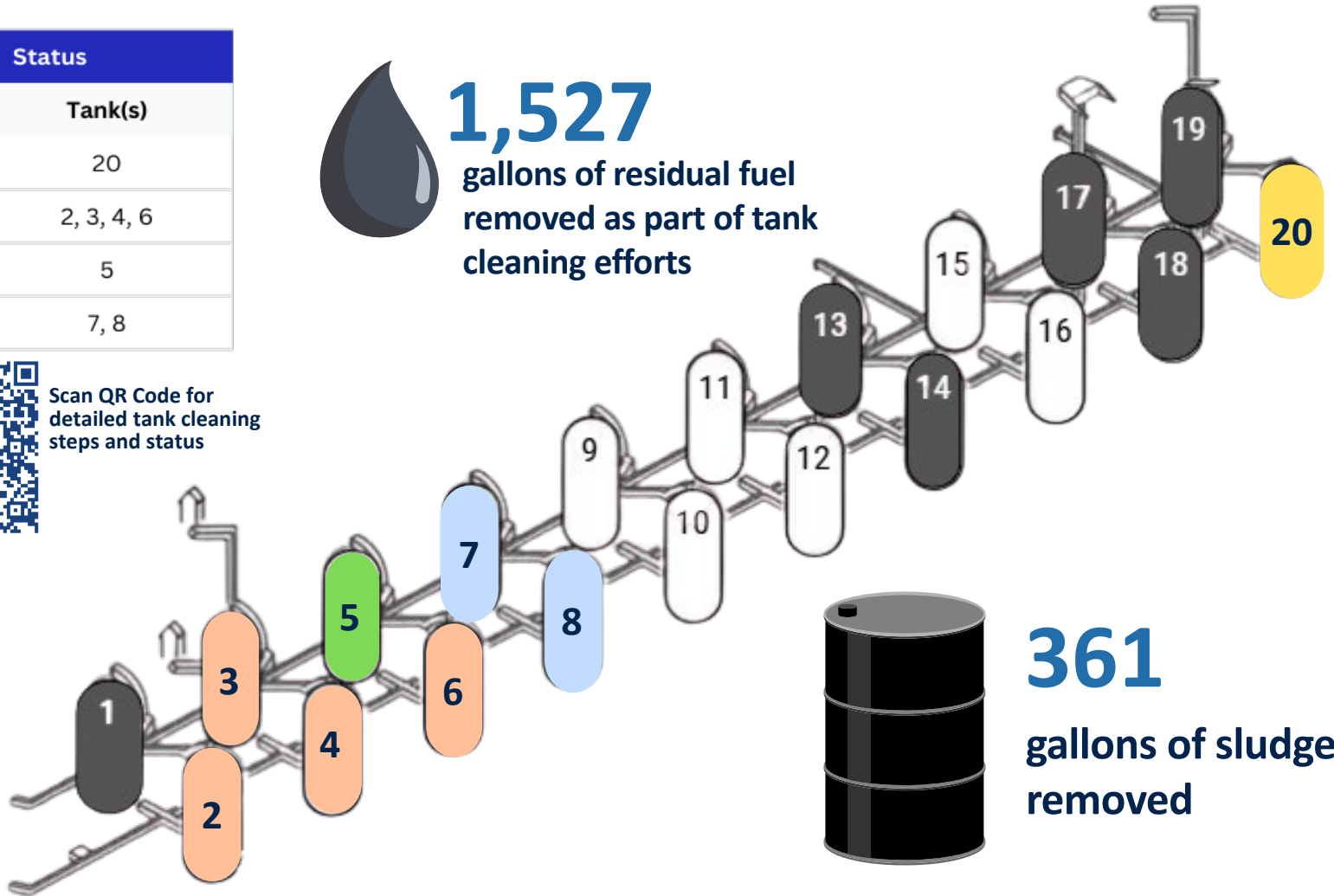


Scan QR Code for detailed tank cleaning steps and status



## 1,527

gallons of residual fuel removed as part of tank cleaning efforts



## 361

gallons of sludge removed

\*Gray tanks were empty and not in service before defueling



# Tank Cleaning Verification Sampling

SAFE. DELIBERATE. ENGAGED. COMMITTED.



Cloth wipe samples collected according to the Society for Protective Coatings (SSPC) method 1 showed no signs of fuel, but visible staining was observed

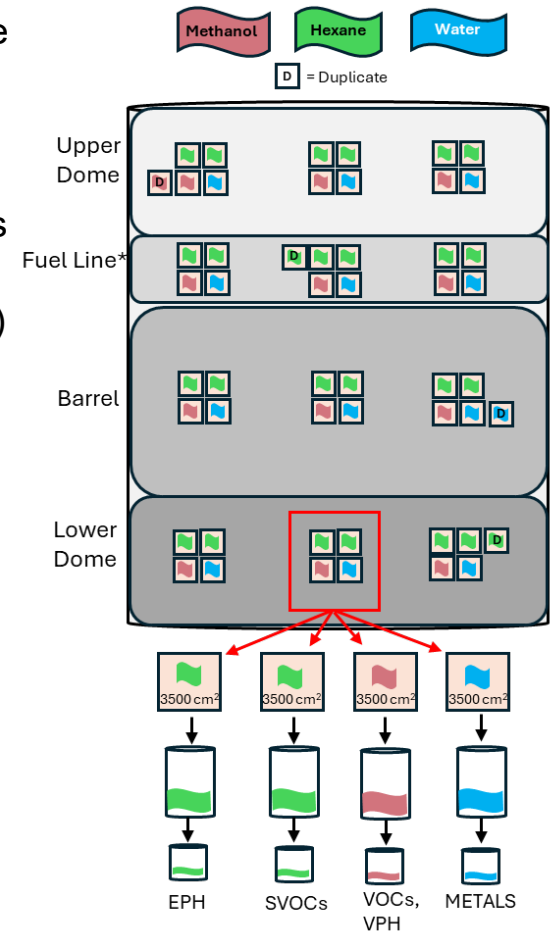
To characterize the staining/residue, wipe samples will be collected and analyzed for each of the following:

1. Extractable Petroleum Hydrocarbons (EPH)
2. Volatile Organic Compounds (VOCs) and Volatile Petroleum Hydrocarbons (VPH)
3. Semi-Volatile Organic Compounds (SVOCs)
4. Metals

Notes:

- EPH and VPH characterize Total Petroleum Hydrocarbons (TPH) by grouping hydrocarbons into fractions of similar toxicity, enabling a more accurate risk evaluation that aligns with Environmental Action Levels.

## Tank Residue Sampling Method

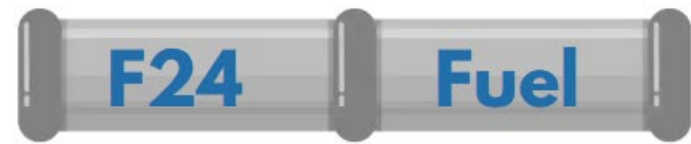




# Pipeline Cleaning Status

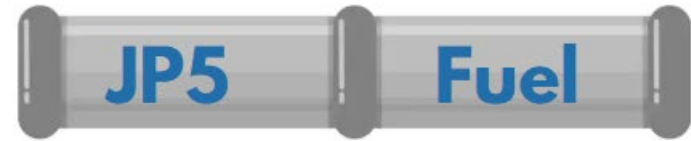
SAFE. DELIBERATE. ENGAGED. COMMITTED.

Information current as of 26 SEP 2025



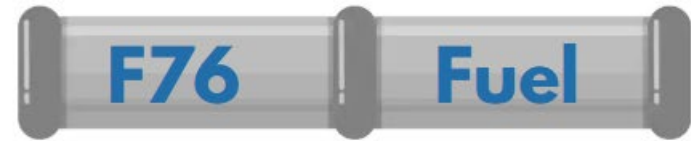
**89%**  
of pipeline clean

**477** gallons of residual fuel removed



**91%**  
of pipeline clean

**1,298** gallons of residual fuel removed



**91%**  
of pipeline clean

**729** gallons of residual fuel removed



**2,504**  
total gallons of residual fuel removed as part of pipeline cleaning efforts



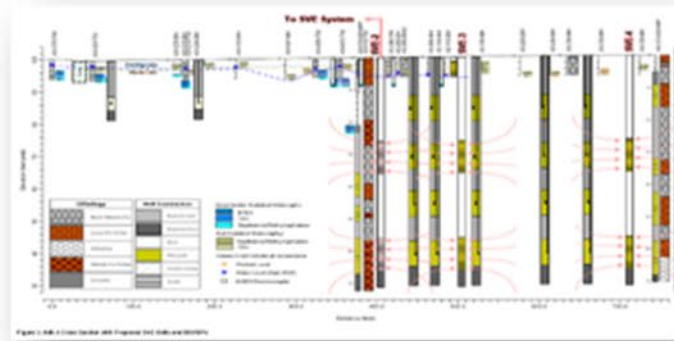
# Environmental Updates



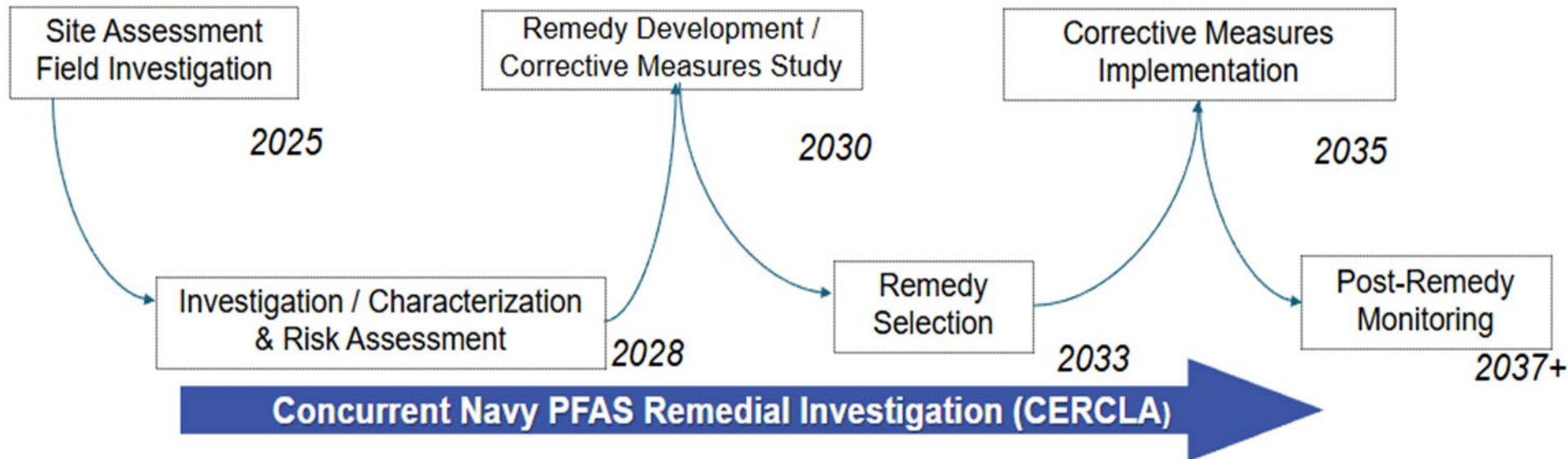
# Site Assessment, Investigation, & Remediation

SAFE. DELIBERATE. ENGAGED. COMMITTED.

Deliberate, regulated and data-driven process



## General Process Flow





# Environmental Monitoring & Remediation

SAFE. DELIBERATE. ENGAGED. COMMITTED.



**Passive soil vapor monitoring** of conditions below fuel tanks



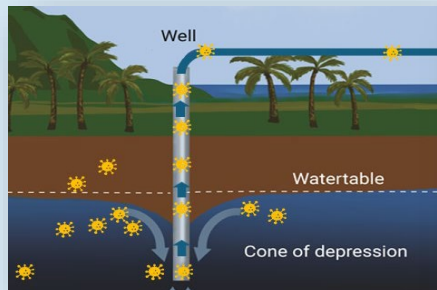
**Air quality monitoring** during tank cleaning ventilation



**Soil vapor extraction pilot study** to evaluate remediation technology



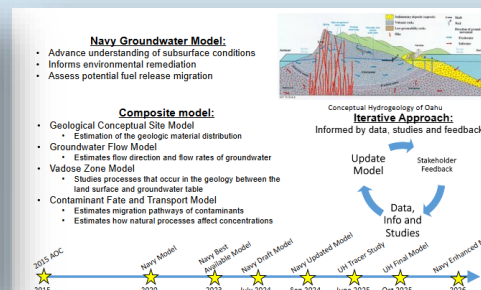
**Extensive sampling** of field investigation for **site assessment and cleanup**



**Pumping Red Hill Shaft** to sustain groundwater capture zone



**Drilling additional groundwater monitoring wells** to increase visibility



**Groundwater flow modeling** to understand groundwater characteristics



**Ecological monitoring** of Halawa Stream



# RETURNING TO COMPLIANCE MONITORING



## Nov. 2021 release impacts JBPHH system

Nov. 2021 - Dec. 2021

- Hawaii Department of Health (DOH) health advisory.

## Interagency Drinking Water System Team

Dec. 2021 - Mar. 2022

- Team of experts from DOH, Environmental Protection Agency (EPA), Navy and Army formed to develop requirements.

## JBPHH Drinking Water System Flushing

Dec. 2021 - Mar. 2022

- Complete flush of the JBPHH distribution system including all facilities and residences.
- DOH lifted health advisory, Mar. 2022: certified system as safe.

## Drinking Water Long Term Monitoring

Mar. 2022 - Mar. 2024

- 24-month monitoring of the JBPHH drinking water.
- 9,200+ samples.
- 50+ analytes - metals, hydrocarbons, Synthetic Organic Compounds, and Volatile Organic Compounds.
- Repeated sampling of source and schools.
- 19 zones.

## Extended Drinking Water Monitoring

Apr. 2024 - Mar. 2025

- Navy voluntarily implemented: approved by EPA.
- 6,200+ samples.
- 50+ analytes.
- Expanded fuel indicator compounds.
- New zone in Manana.
- Higher frequencies of priority areas.

Submit  
Closeout  
Report to  
Regulators

## Compliance Monitoring

- Recurring monitoring in accordance with the Safe Drinking Water Act for drinking water systems.
- Full drinking water analytes sampled for, plus required operational testing (bacteria/chlorine/etc).
- Reported to all consumers by the JBPHH consumer confidence report which is completed each summer.

+

- Lead and Copper Rule (LCR)
- Lead in Priority Area Rule (LIPA)

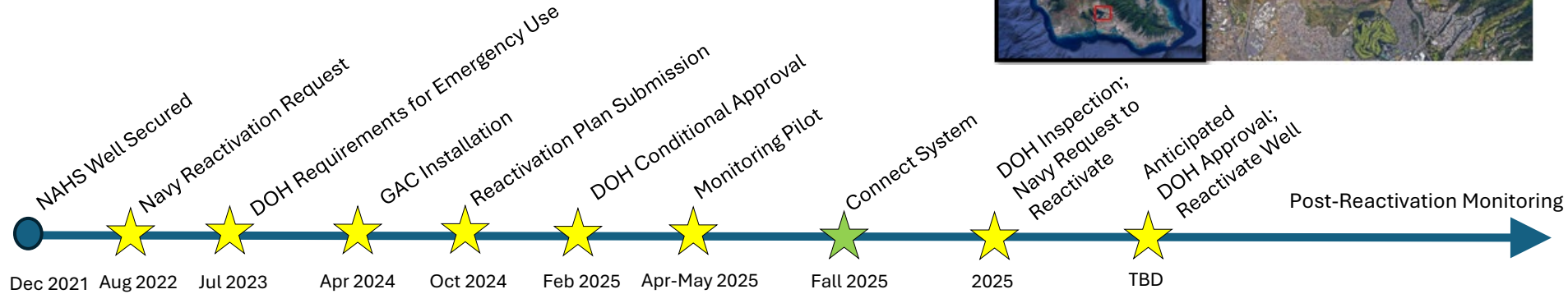
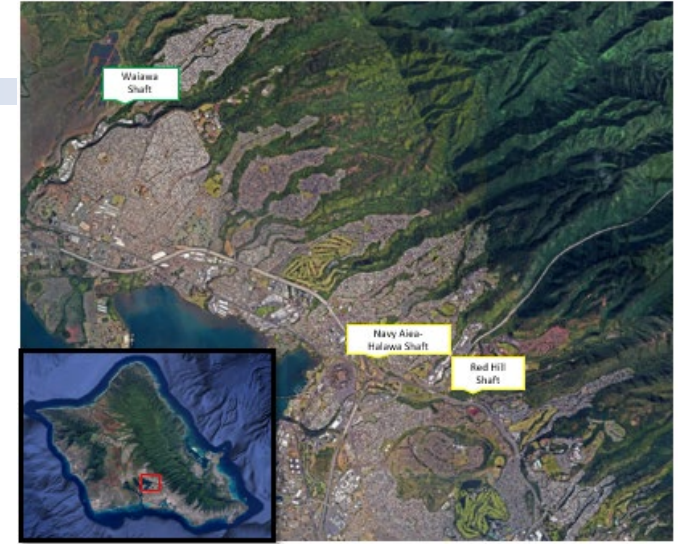


# Navy Aiea-Halawa Shaft Reactivation

SAFE. DELIBERATE. ENGAGED. COMMITTED.

## Overview

- One of three drinking water production wells supporting JBPHH – currently isolated from system
- Important asset for DoD utility resiliency
- Extensive monitoring
- Proactive installation of onsite treatment system



## Communication

- NCTF-RH open houses
- Stakeholder engagements
- *Red Hill Highlights*
- Podcasts
- Public webinar
- NCTF-RH website
- Safewaters website
- DOH, CWRM, public notice



# Resources

SAFE. DELIBERATE. ENGAGED. COMMITTED.



## Navy Closure Task Force–Red Hill

[navyclosuretaskforce.navy.mil](http://navyclosuretaskforce.navy.mil)

- Document library for defueling & closure of Red Hill Bulk Fuel Storage Facility
- Photos & media gallery
- Upcoming public engagements
- Weekly Red Hill Highlights



## Download the free NCTF-RH app

- Interactive progress dashboard
- Latest news
- Photos & videos
- Presentations & fact sheets
- Air quality monitoring data



## “Let’s Talk Red Hill” Vodcast

[youtube.com/@NCTF-RH](https://youtube.com/@NCTF-RH)

- Updates and information regarding the closure of the Red Hill Bulk Fuel Storage Facility

